



**KNIGHT REGIMENT (KR) NEW  
PARENT ORIENTATION  
2022**

# What is the SMHSMB?



## A IRS 501(c)(3) non-profit organization

- A parent organized and operated volunteer organization
- *All parents or guardians of SMHS music and Color Guard programs are members of the organization*

## Mission

*"...to provide financial and volunteer support to the SMHS Music & Color Guard program..."*



# The Fun Starts this Summer!

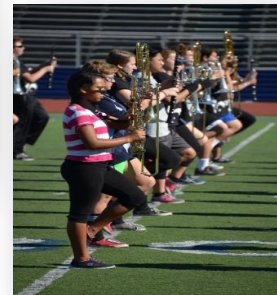
## Band/Guard Enrollment Days

- TBD
- July 23, 10:00 AM - 4:00 PM
- July 25, 3:00PM - 7:00PM

## Summer Music Academy (SMA) - MANDATORY!

- New Members : July 25 - July 29, 5:30-8:30
- All Members : July 26 - July 29, 5:30-8:30
- All Members : August 1 - August 5, 1:00-9:00
- All Members : August 8- August 12, 1:00-9:00

## Summer Rehearsals (If you are in town) - On Charms and next slide



# Summer Rehearsals - optional if in town

## PERCUSSION

MON (6/13) 12pm-2pm

TUES (6/14) 12pm-2pm

WED (6/15) 12pm-2pm

MON (6/20) 12pm-2pm

MON (6/27) 12pm-2pm

MON (7/11) 12pm-2pm

MON (7/18) 12pm-2pm

Then... from SMA on (7/25) -  
Everything is MANDATORY.

## WINDS (highly encouraged but NOT mandatory rehearsals)

MON (6/13) KR Winds 6pm-8pm

MON (6/20) Lincolnshire Winds 6pm-8pm

MON (6/27) KR Winds 6pm-8pm

WED (7/6) Lincolnshire Winds 6pm-8pm

MON (7/11) KR Winds 6pm-8pm

MON (7/18) Lincolnshire Winds 6pm-8pm

Then... from SMA on (7/25) - Everything is MANDATORY.



# ... and continues throughout the Fall

## Student Rehearsals - Monday through Thursday

- Monday & Wednesday 6:00 - 9:00 pm
- Thursday 3:30 pm - 6:00 pm

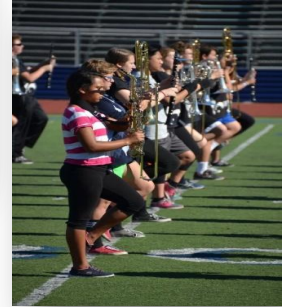
## Friday night football game performances

## Saturday Rehearsals (All day)

## District Showcase and Tournament Performances

## Concert Band Performances

## Fundraisers



Get email updates:



# Enrollment Things to Know

- **Music program enrollment is NOT school registration(!)**
  - Music program enrollment happens before Summer Music Academy (SMA)
  - School registration happens before the start of school in August
  - Need to do BOTH or there will be unhappy faces all around
- **School registration is in the mornings**
  - Check the school website for details

# Enrollment Things to Know

## Enrollment Basics

- **All students need to complete music program enrollment each year**
  - CHARMS (Used for gradebook, music distribution, music submissions)
  - SMHSMB Enrollment (Used to distribute program information, order personal equipment, stay up to date with fundraising, order spirit wear, etc.)
- **All students should order required personal equipment**
  - A selection of lightly used marching shoes available at registration for free(!)
  - Practice shirts can be ordered tonight or online for pick up at SMA
- **Students MAY order SUMMER MUSIC ACADEMY (SMA) dinners**
  - Students can not leave the SMHS campus for dinner during SMA
  - SMA dinners are offered the last two weeks of camp, you can place order at the first enrollment.



# Enrollment Things to Know

## Information you will need for Enrollment

- **Student contact information**
  - Primary home address, phone number, email address
- **Contact information for all adults that may need to receive program information**
  - Phone number, email address
- **Medical Insurance Information (Provider, Identification / Policy Number)**
- **Information about relevant medical conditions**
  - KR travels, and information about extraordinary medical issues helps your student get correct treatment promptly

# Enrollment Things to Know

**Enrollment is not complete without a physical and a completed “Blue Book”**

- **The Blue Book is a SMUSD requirement for all students participating in marching band or color guard**
  - Books are available online after June
- **A physical is required to complete the Blue Book**
  - Students are not allowed to participate in physical activity without a completed Blue Book! (SMUSD rule...)
- **Blue Books will be turned in to SMHS at school registration**
  - *Students must provide a copy to the directors of the back page of the BB at or before the start of SMA*

Your Life Lines

[www.charmsoffice.com](http://www.charmsoffice.com)

Password - sanmarcosmb

[www.sanmarcosbands.org](http://www.sanmarcosbands.org)

*The more you do online, the easier it is on everyone!*

A decorative footer consisting of overlapping geometric shapes. On the left, there is a blue triangle pointing right. To its right is a larger, light blue trapezoidal shape that also points right, partially overlapping the first one. The rest of the bottom of the slide is a solid, medium blue rectangle.

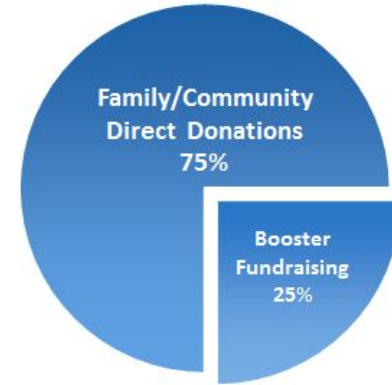
# How do we collectively raise funds?

**Annual Budget Goal: approximately \$175,000**

- Not funded by the school district
- Program expenses average \$630/student
- Travel year \$220,000, \$800/student

## HOW CAN WE DO IT?

- *Family/Community Donations*
- Booster Fundraising Efforts
  - Special Events (Jazz in Havana, Motors for Music, etc)
  - Hosting Tournaments, Festivals & Concerts



# Suggested Family Investment

**Suggested Annual Donation for  
all Band & Guard Families-  
\$450-550**

## Additional Considerations

- Marching Shoes & Gloves
- Concert Attire
- Winter Guard Costumes
- Small Ensemble Travel



# How can I make an investment?

## Direct Donation

- By Cash, Check, or Credit Card at KR Enrollment Days
- Online
- Donations may be tax deductible

## Employer Matching Contributions

- An easy way to double your donation
- Many employers will match your donation!

*Microsoft, HP, Callaway, Sempra, Bank of America...*



## Business/Corporate Support

***You are the biggest link to our businesses!***

# What can YOU do as a volunteer\*?

- Enroll a student
- Create a poster
- Sew a hem
- Hot glue a prop
- Load a truck
- Organize a fundraiser
- Grill a burger
- Sew a flag
- Paint a prop
- Scan a ticket
- Create a program
- Maintain a website
- Balance the books
- Write a grant
- Chaperone a trip
- Serve a meal
- Fix an instrument



\* This is only a partial list (!)



# Board Positions

- President
- V.P. Fundraising
- V.P. Logistics  
([roadies@sanmarcosbands.org](mailto:roadies@sanmarcosbands.org))
- Treasurer
- Secretary





# Go Knights!

